



An Electronic Medical Record and Document Management Company

VXPATIENT PICTURE

OPEN SOURCE RELEASE NOTES

Contents

vxPatientPicture EXE	4
vxPatientPicture v0.1.1.0	4
vxPatientPicture v0.1.1.1	4
vxPatientPicture v0.1.1.2	5
vxPatientPicture v0.1.2.0	6
vxPatientPicture v0.1.2.1	7
vxPatientPicture v0.1.2.2	7
vxPatientPicture v0.1.2.3	8
vxPatientPicture v0.1.3.0	8
vxPatientPicture v0.1.3.1	9
vxPatientPicture v0.1.3.2	10
vxPatientPicture v0.1.3.3	11
vxPatientPicture v0.1.3.4	12
vxPatientPicture v0.1.3.5	12
vxPatientPicture v0.1.3.6	13
vxPatientPicture v0.1.3.7	14
vxPatientPicture v0.1.3.8	14
vxPatientPicture v0.1.3.9	15
vxPatientPicture v0.1.3.10	18
vxPatientPicture v0.1.3.11	19
vxPatientPicture v0.1.3.12	20
vxPatientPicture v0.1.3.13	21
vxPatientPicture v0.1.4.0	21
vxPatientPicture v0.1.4.1	21
vxPatientPicture v0.1.4.2	22
vxPatientPicture v0.1.4.3	22
vxPatientPicture v0.1.4.4	22
vxPatientPicture v1.0.0.0	22
vxPatientImages DLL	22
vxPatientImages v0.8.0.3	22

vxPatientPicture OPEN SOURCE RELEASE NOTES

vxPatientImages v0.8.0.4	23
vxPatientImages v0.8.0.5	23
vxPatientImages v0.8.0.6	23
vxPatientImages v0.8.0.7	23
vxPatientImages v0.8.0.8	24
vxPatient Picture KIDS.....	24
VFDVXP PATIENT PIC GUI 1.0 T1	24
VFDVXP PATIENT PIC GUI 1.0 T2	27
VFDVXP PATIENT PIC GUI 1.0 T3	30
VFDVXP PATIENT PIC GUI 1.0 T4	32
VFDVXP PATIENT PIC GUI 1.0 T5	34
VFDVXP PATIENT PIC GUI 1.0 T6	38
VFDVXP PATIENT PIC GUI 1.0 T7	41

vxPatientPicture EXE

vxPatientPicture v0.1.1.0

Category: Visual and Non-Visual.

Problem: HPQC #2: HPQC #2 As a product I want a way to communicate with the database to locate the correct picture for the patient so that I am sure to have an accurate picture for my patients.

Resolution: Implemented vxrpcBroker to communicate with the database, and locate the correct patient picture.

Category: Visual and Non-Visual.

Problem: HPQC #3: As a user I want to be able to store the picture in the same location on the system so that I know that there is only one picture available to the system at a time.

Resolution: An individual patient has either 0 or 1 pictures, stored in a location designated by the Vista parameter, VFDVXP PATIENT PIC ROOT

Category: Visual and Non-Visual.

Problem: HPQC #5: As a product, I want to limit the picture size for the patients so that I can make the most of the storage space available and have a good quality picture all the time.

Resolution: Patient pictures are sized to standard thumbnail, 200x150 pixels.

Category: Visual and Non-Visual.

Problem: HPQC #6: HPQC #6 As an admin user, I want to know what is the name of the patient picture file so that I can locate patient pictures in a quick and efficient way.

Resolution: Patient pictures are named as <Patient DFN>.jpg

For example, patient with DFN=15 would have a picture file named 15.jpg.

Category: Visual and Non-Visual.

Problem: HPQC #12: As an admin user, I want to have any stored image for the patient displayed at patient selection so that I can view any patient picture already available for the patient.

Resolution: If the selected patient has a picture, it is loaded upon patient selection.

vxPatientPicture v0.1.1.1

Category: Defect

Problem Description: The RPC (VFDC FM FILER) was not in place.

Resolution: The remote procedure call is now coded. If the RPC fails or returns a -1 then the already saved file will be deleted and the preview will be set to nil. The remote procedure is only called if the picture is saved to the location in the first place.

Category: Defect

Problem Description: A failure to define a root path for the pictures would still allow the user to continue and save pictures.

vxPatientPicture OPEN SOURCE RELEASE NOTES

Resolution: When the program is initialized after login the root is defined through an RPC; if it fails, returns a -1 or is null proper messages will display. If the user does not have the admin key the program will close. The program will remain open for users with the admin key because there will be a future option for them to choose and set the parameter via the GUI.

vxPatientPicture v0.1.1.2

Category: Non-Visual.

Ref #: none

Problem: Performance too slow when using server for temp image files.

Resolution: Moved temp file processing back to the client.

Category: Non-Visual.

Ref #: none

Problem: Image processing in v0.1.1.1 and earlier used a single-level server directory folder for image storage.

Resolution: Original image single-level directory structure has been replaced with a two-level directory structure, with a single root folder, and multiple sub-folders under the root. Sub-folder naming convention is **vx_<Delphi DateTime>**, to guarantee unique folder names as images are added.

Category: Non-Visual.

Ref #: none

Problem: No set limit on number of files in a directory (other than OS limit), and no checking for the number of files in a directory.

Resolution: Now checking for number of files in the directory where image is being stored. The current max number of files per directory for production version = 100,000. The current max number of files per directory for Debug Mode = 5.

Category: Non-Visual.

Ref #: none

Problem: No checking for pre-existing images in image directory structure.

Resolution: The image just Accepted via the 'Accept' button will be saved.

We make this check to ensure that there is one, and only one physical image file per patient. Otherwise, it would be possible for a patient to have another pic taken/stored at some later date, in addition to the previous one. In this case, the new pic would be stored to the *current* image subdirectory, and the patient would now have more than one physical .jpg file, that is, if the previous image had been stored in any subdirectory other than the last one. Although, the image retrieved for vx CPRS/vx BCMA would be the one indicated by field 21603 in File #2, we don't want to leave any unused .jpg files lying around, taking up space.

Category: Visual and Non-Visual.

Ref #: none

Problem: 'Delete' button not functioning correctly.

Resolution: 'Delete' button now deletes any existing patient images, and sets the PICTURE LINK to null.

Category: Visual and Non-Visual.

Ref #: none

Problem: After previous directory structure modifications, the 'Crop Image' functionality no longer

vxPatientPicture OPEN SOURCE RELEASE NOTES

working correctly.

Resolution: Now using TFileStream with OLEGraphics to correct JPEG Error #53, on crop.

vxPatientPicture v0.1.2.0

Category: Visual, Non-Visual.

Ref #: none

Problem: Logoff then immediate Logon produces access violation.

Resolution: Fixed

Category: Visual, Non-Visual.

Ref #: none

Problem: Click 'Capture', and answer 'No' to confirm patient not working correctly.

Resolution: Fixed

Category: Visual, Non-Visual.

Ref #: HPQC #20

Problem: Access/Verify codes are pre-polluted in kernal signon dialog.

Resolution: Removed Access/Verify codes from kernal signon dialog.

Category: Visual, Non-Visual.

Ref #: none

Problem: Status bar not yet populated with application data.

Resolution: Status bar now contains camera connection status, patient DFN: <Lastname,Firstname>, vx Broker connection status.

Category: Visual, Non-Visual.

Ref #: none

Problem: Crop, Accept and Delete buttons enabled/disable at inappropriate times.

Resolution: Fixed.

Category: Visual, Non-Visual.

Ref #: none

Problem: On patient change, any existing temporary image files on the client are not deleted.

Resolution: Now deleting temporary image files on select patient, if the newly selected patient is different than the current patient.

Category: Visual, Non-Visual.

Ref #:

Problem: Patient information contents need modification.

Resolution: Patient information now showing MRN, Name, Sex, DOB, Age

Category: Visual, Non-Visual.

Ref #: none

Problem: When main form and Admin form maximized or minimized, GUI components not anchored.

Resolution: Main form size is constrained on maximize/minimize, so that it is always the same size (Main form: 578x654, Admin form: 419x545).

vxPatientPicture OPEN SOURCE RELEASE NOTES

Category: Visual, Non-Visual.

Ref #: none

Problem: More than one instance of vxPatientPicture can be executed at the same time.

Resolution: Introduced code to prevent more than one application instance at one time. Warning message dialog with 'OK' button.

Category: Visual, Non-Visual.

Ref #: none

Problem: Accelerator keys for GUI buttons not yet implemented.

Resolution: Implemented accelerator keys for all GUI buttons.

Category: Visual, Non-Visual.

Ref #:

Problem: Color of 'Select Patient' button same as Logon/Logoff.

Resolution: Changed color of 'Select Patient' button to white to help prevent accidental logoff when clicking in a hurry.

vxPatientPicture v0.1.2.1

Category: Visual, Non-Visual.

Ref #: HPQC 16

Problem: After launching the vxPatientPicture capture application, the access and verify codes are automatically filled out.

If the user selected "OK", an error occurred stating "Not a valid ACCESS CODE/VERIFY CODE pair". However, if the user selected "Cancel", the application opened.

Developer's Note: As stated, this is actually 3 separate issues. This release addresses the last one stated re: user selects "Cancel". The others were addressed in v0.1.2.0

Resolution: Application now terminates if user selects 'Cancel' on login form.

vxPatientPicture v0.1.2.2

Category: Visual, Non-Visual.

Ref #: none

Problem: Admin setting form

Resolution: Implemented Administrator Settings form. From this form, vxPP GUI Admin can specify Image Root Directories, and the maximum number of files per image subdirectory.

Category: Visual, Non-Visual.

Ref #: none

Problem: Splash

Resolution: Added a vxPP splash screen.

Category: Visual, Non-Visual.

Ref #: none

Problem: Finding Patient Image

Resolution: Added user message, 'Finding patient image. Please wait...', for user-feedback during long db-image retrievals.

vxPatientPicture OPEN SOURCE RELEASE NOTES

Category: Visual, Non-Visual.

Ref #: none

Problem: No Image Available

Resolution: Added 'No Image Available' to Picture Preview pane, if a selected has no image under the currently defined image root directory.

Category: Visual, Non-Visual.

Ref #: none

Problem: Numerous internal tweaks, changes and small GUI enhancements (e.g., status bar messages on main form)

Resolution:

Category: Visual, Non-Visual.

Ref #: HPQC #27

Problem: After selecting 'No' on the message, the patient selection screen will be displayed. However; if you select a new patient or cancel, the capture application will take a picture anyway (of anything in front of the camera) and display it in the picture preview as the patient you selected; thus giving the impression that a picture has been taken and saved. The picture however, does not save. If you log out and back in and select that patient, the image will not be there.

Resolution: Fixed.

Category: Visual, Non-Visual.

Ref #: HPQC #17

Problem: The application will behave as if it was logged in. The logon button was grayed out and logoff was available to select. However; the patient's information was not displayed in the "Patient Information" section. This will only happen if I choose the same patient as I had previously selected. If I chose a different patient the information would be displayed.

Resolution: Fixed.

vxPatientPicture v0.1.2.3

Category: Visual, Non-Visual.

Ref #: none

Problem: Changes to correct a problem with Image Root Directory paths.

Resolution: Fixed

vxPatientPicture v0.1.3.0

Category: Visual, Non-Visual.

Ref #: none

Problem: Access violation on click Disconnect button, Logoff, Logon.

Resolution: Fixed.

Category: Visual, Non-Visual.

Ref #: none

Problem: Access violation on *not* click Disconnect button, Logoff, Logon.

Resolution: Fixed

Category: Visual, Non-Visual.

vxPatientPicture OPEN SOURCE RELEASE NOTES

Ref #: none

Problem: Enhancement

Resolution: On Logoff then Logon, camera now reconnects automatically, instead of forcing user to manually reconnect.

Category: Visual, Non-Visual.

Ref #: none

Problem: Temp image files written to app directory, not getting deleted on app terminate (such as an error condition that terminates the app)

Resolution: Fixed. Temp image files now getting deleted on app terminate (such as an error condition that terminates the app)

Category: Visual, Non-Visual.

Ref #: none

Problem: Access violation on click 'Cancel' on Patient Select form.

Resolution: Fixed.

vxPatientPicture v0.1.3.1

Category: Visual, Non-Visual.

Ref #:

Problem: Enhancement

Resolution: Now detecting any changes in fields of Admin form. If user makes changes to any field values, then clicks 'Close' without first clicking 'Save All', message displayed to allow save on close (click 'Yes' to save, or 'No' to close without saving).

Category: Non-Visual.

Ref #:

Problem: Enhancement

Resolution: Added miscellaneous internal exception-handling.

Category: Visual, Non-Visual.

Ref #:

Problem: Enhancement

Resolution: Corrected tab-order of visual components.

Category: Visual, Non-Visual.

Ref #:

Problem: Enhancement

Resolution: Added miscellaneous status bar messages.

Category: Visual, Non-Visual.

Ref #:

Problem: Physical image file not getting deleted on 'Delete' button click.

Resolution: Fixed. Now deleting physical file.

Category: Visual, Non-Visual.

Ref #:

Problem: Physical image file not getting deleted on exception when 'Accept' button click.

vxPatientPicture OPEN SOURCE RELEASE NOTES

Resolution: Fixed. Now deleting physical file.

Implemented: K. Wright

Category: Visual, Non-Visual.

Ref #:

Problem: Enhancement

Resolution: Added hints to visual components.

Category: Visual, Non-Visual.

Ref #:

Problem: Enhancement

Resolution: Added main menu button, 'Options'.

Category: Visual, Non-Visual.

Ref #:

Problem: Enhancement

Resolution: Added 'Hints On/Off' toggle under main menu button, 'Options', to allow user to toggle hints on or off as desired.

Category: Visual, Non-Visual.

Ref #:

Problem: vxPP should disallow execution if webcam driver is not present.

Resolution: Fixed. vxPP now checks for installed webcam drive on startup. If driver is not detected, user message to that effect, and vxPP shuts down.

vxPatientPicture v0.1.3.2

Category: Visual, Non-Visual.

Ref #:

Problem: No validation of Division and System directories on Admin form.

Resolution: Now validating that Division and System directories exist.

If either path is invalid then stay on Admin form.

Category: Visual, Non-Visual.

Ref #:

Problem: No validation of Division and System directories on Admin form.

Resolution: If either path is invalid on CLOSE then user dialog gives opportunity to save. If user selects "Yes" then save, then close

Admin form. If user selects "No" then close Admin form without saving.

Category: Visual, Non-Visual.

Ref #:

Problem: Enhancement

Resolution: Added status bar messages to Admin form to support Division and System directory validation.

Category: Visual, Non-Visual.

Ref #:

Problem: Malformed Division and System paths on Admin form.

Resolution: Fixed.

Category: Visual, Non-Visual.

Ref #:

Problem: Enhancement

Resolution: Centered 'OK' and 'Cancel' button text on patient select form.

Category: Visual, Non-Visual.

Ref #:

Problem: Patient Select form: size, position, font size being saved per session.

Resolution: Removed code for Patient Select form: size, position, font size being saved per session.

Category: Visual, Non-Visual.

Ref #:

Problem: vxPP Administrator must select a patient in order to access the Admin form.

Resolution: Added a vxPP Administrator "backdoor" method of running vxPP to allow vxPP Admin to circumvent the regular

vxPP patient selection when starting vxPP, avoiding having to select a patient in order access the Admin form.

A vxPP Admin should not be forced to have to select a patient on startup just to be able to get to the Admin form. This enhancement allows a vxPP Admin to run vxPP and go directly to the Admin form, skipping

patient selection altogether. This "backdoor" is implemented as a Windows command line parameter.

It can be run from

the windows command line (cmd), or from a shortcut.

To run vxPP via the Admin "backdoor", add the command line parameter "admin" to the command line (or shortcut).

If the command line parameter 'admin' is used, the user launching vxPP must have the VXDVPX PATIENT PIC ADMIN key.

If the user does not have this key, then vxPP will start up normally.

If vxPP is run using this command line parameter, then 'Close' clicked, vxPP will close immediately without going

through the patient selection process. This is done to potentially prevent a non-Admin from continuing to run vxPP in Admin mode.

Example: D:\work\d2006\vxPatientPicture\vxPatientPicture.exe admin

Note: (1) there must be a space between .exe and 'admin', (2) the command line parameter 'admin' is not case-sensitive. It can be either lower case, upper case or mixed case.

vxPatientPicture v0.1.3.3

Category: Visual, Non-Visual.

Ref #:

Problem: Need patient picture preview on the Patient Select form.

Resolution: Added patient picture preview to the Patient Select form.

vxPatientPicture v0.1.3.4

Category: Visual, Non-Visual.

Ref #: HPQC #27

Problem: After selecting 'No' on the 'Confirm Patient' message, the patient selection screen will be displayed. However; if you select a new patient or cancel, the capture application will take a picture anyway (of anything in front of the camera) and display it in the picture preview as the patient you selected; thus giving the impression that a picture has been taken and saved. The picture however, does not save. If you log out and back in and select that patient, the image will not be there.

Resolution: Modified the "No" response. Fixed.

Category: Visual, Non-Visual.

Ref #: HPQC #41

Problem: After logging off of vxPatient Picture, the camera did not disconnect. After logging back on, the camera button says "Connect Camera" even though the camera was connected. The status bar says "Camera connected" as well.

Resolution: Camera now disconnects on Logoff. Connect/Disconnect Camera button and status bar correctly reflect the status of the camera connection.

Category: Visual, Non-Visual.

Ref #: HPQC #54

Problem: The network path for 'Division' doesn't appear to save beyond the current vxPatient Picture session.

The patient's picture was also not saved.

Resolution: Configuration issue: Division entity did not exist on vxCPT. Fixed.

Category: Visual, Non-Visual.

Ref #: HPQC #55

Problem: The maximum images per subdirectory for 'Division' doesn't appear to save beyond the current vxPatient Picture session.

Resolution: Configuration issue: Division entity did not exist on vxCPT. Fixed.

vxPatientPicture v0.1.3.5

Category: Visual, Non-Visual.

Ref #: Enhancement

Problem: Added menu options to 'Options' on main menu to select from three different thumbnail resolutions of 100x75, 200x150, 400x200 pixels.

The resolution (picture quality) of the resulting patient picture is determined by this selection. Default selection = 200x150.

Note that image file-size increases as thumbnail resolution increases.

Approximate image file sizes for each resolution listed on the 'Options' menu: Low=15Kb,

Medium=50Kb, High=200Kb.

Category: Visual, Non-Visual.

Ref #: Enhancement

Problem: Disabled maroon colored 'Delete' button is hard to see that it is disabled.

Resolution: Changed color of 'Delete' button to silver. Changed font color of 'Delete' button to

vxPatientPicture OPEN SOURCE RELEASE NOTES

Black+Bold. Changed font size of 'Delete' button to 10pt.

Category: Visual, Non-Visual.

Ref #: Bug fix.

Problem: Uncropped images getting saved as-is, without being resized to thumbnail resolution. This means that if a user happens to be using a 2 Megapixel camera, and 'Accept' clicked with no cropping, the image file would be relatively small. Doing the same thing with an 18 Megapixel camera would produce a much larger image file, possibly multi-megabytes in size. In other words, no image file size limitations are being placed on 'Accept' with no cropping.

Resolution: Image file size is now being limited by the main menu 'Options|Thumbnail Image Resolution' setting. There are three different thumbnail resolutions to choose from: 100x75, 200x150, 400x200 pixels. On 'Accept', the image is now being resized according to this Options setting before being stored on the server.

vxPatientPicture v0.1.3.6

Category: Visual, Non-Visual.

Ref #: HPQC #60

Problem: Aspect ratio of crop selection is not being enforced, and should restrict to an aspect ratio of the target image dimensions in CPRS.

Resolution: Aspect ratio of 4:3 now being enforced. Note that as of this release date, patient images in vxCPRS do not use standard image aspect ratios.

Category: Visual, Non-Visual.

Ref #: HPQC #61

Problem: Add 'Undo' button that allows previously executed steps, such as image capture or acceptance, to be 'undone', reverting to prior state.

Resolution: Added Undo functionality for when a previously existing patient picture is overwritten by a new one. If the image is overwritten with a new image, user can click 'Undo' to restore the patient's previous picture.

Category: Visual, Non-Visual.

Ref #: none

Problem: User has ability to Delete images from the system at will.

Resolution: Delete is now functional only to delete the patient image if that patient has no previously saved image stored on the system.

Category: Visual, Non-Visual.

Ref #: HPQC #59

Problem: Cropped images are being stored and displayed in CPRS with surrounding white space.

Resolution: Cropped images are now being resized to thumbnail dimensions of either 100x75 or 200x150 pixels, depending on the value selected in Main menu 'Options|Thumbnail Image Resolution'. White space is eliminated.

Category: Visual, Non-Visual.

Ref #: HPQC #58

Problem: Images are being stored in their full original size/resolution. Only images that are cropped are currently being stored in standard thumbnail size. Images should be converted to a standard size upon saving.

vxPatientPicture OPEN SOURCE RELEASE NOTES

Resolution: All images are now being saved to thumbnail dimensions of either 100x75 or 200x150 pixels, depending on the value selected in Main menu 'Options|Thumbnail Image Resolution'.

Category: Visual, Non-Visual.

Ref #: HPQC #62

Problem: Suite number of the Address shown in Help > About needs to be changed from #200 to #103

Resolution: Fixed

Category: Visual, Non-Visual.

Ref #: none

Problem: Enhancement

Resolution: Main menu 'Options|Thumbnail Image Resolution' choices are 100x75 or 200x150 pixels.

vxPatientPicture v0.1.3.7

Category: Visual, Non-Visual.

Ref #:

Problem: Undo after Accept not working for new patient picture (no previous picture), when there is storage space available in the current server subdirectory.

Resolution: Fixed.

vxPatientPicture v0.1.3.8

Category: Visual, Non-Visual.

Ref #: 61

Problem: Add 'undo' button.

Resolution: Newly accepted image now continues to display in Preview, and still associated with patient.

Category: Visual, Non-Visual.

Ref #: 67

Problem: Delete button remains enabled after image deletion.

Resolution: Delete button now disabled after delete.

Category: Visual, Non-Visual.

Ref #: 68

Problem: Confirmation dialog box should be displayed prior to image deletion.

Resolution: Added Delete confirmation dialog: Delete button now disables on 'Yes' (after Delete done), but stays enable on 'No' - until new capture or new patient selected.

Category: Visual, Non-Visual.

Ref #: 69

Problem: Receiving error: 'Division by Zero' and 'Picture storage failed'.

Resolution: Fixed. Capture does *not* occur on Capture click. It occurs on Confirm=Yes. No capture occurs before Confirm=Yes. User cannot "continue where they left off" as described in this issue, since no capture had occurred. Accept button now disabled on Cancel patient select, since no capture took place.

vxPatientPicture OPEN SOURCE RELEASE NOTES

Category: Visual, Non-Visual.

Ref #: 72

Problem: 'disconnect Camera' button does not have a keyboard shortcut.

Resolution: Added keyboard shortcuts: Connect and Disconnect.

Category: Visual, Non-Visual.

Ref #: 73

Problem: Group box label 'VistA' should be 'vxVistA'.

Resolution: Fixed.

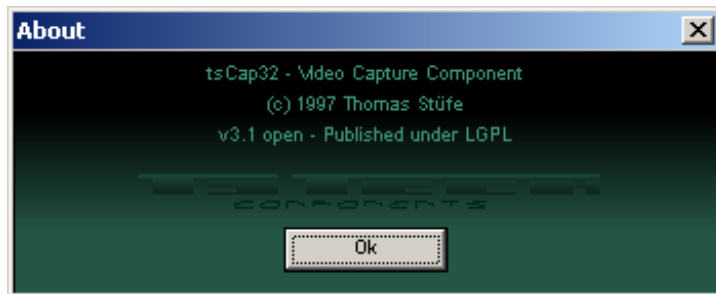
vxPatientPicture v0.1.3.9

Category: Visual, Non-Visual.

Ref #: Enhancement

Problem: Missing 'About' information for TSCAP321 video capture component.

Resolution: Added 'About' information to vxPP About box for TSCAP321 video capture component.

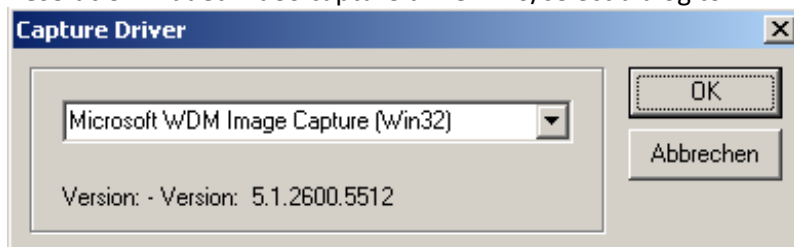


Category: Visual, Non-Visual.

Ref #: Enhancement

Problem: Missing video capture driver info/selection.

Resolution: Added video capture driver info/select dialog to vxPP About box.



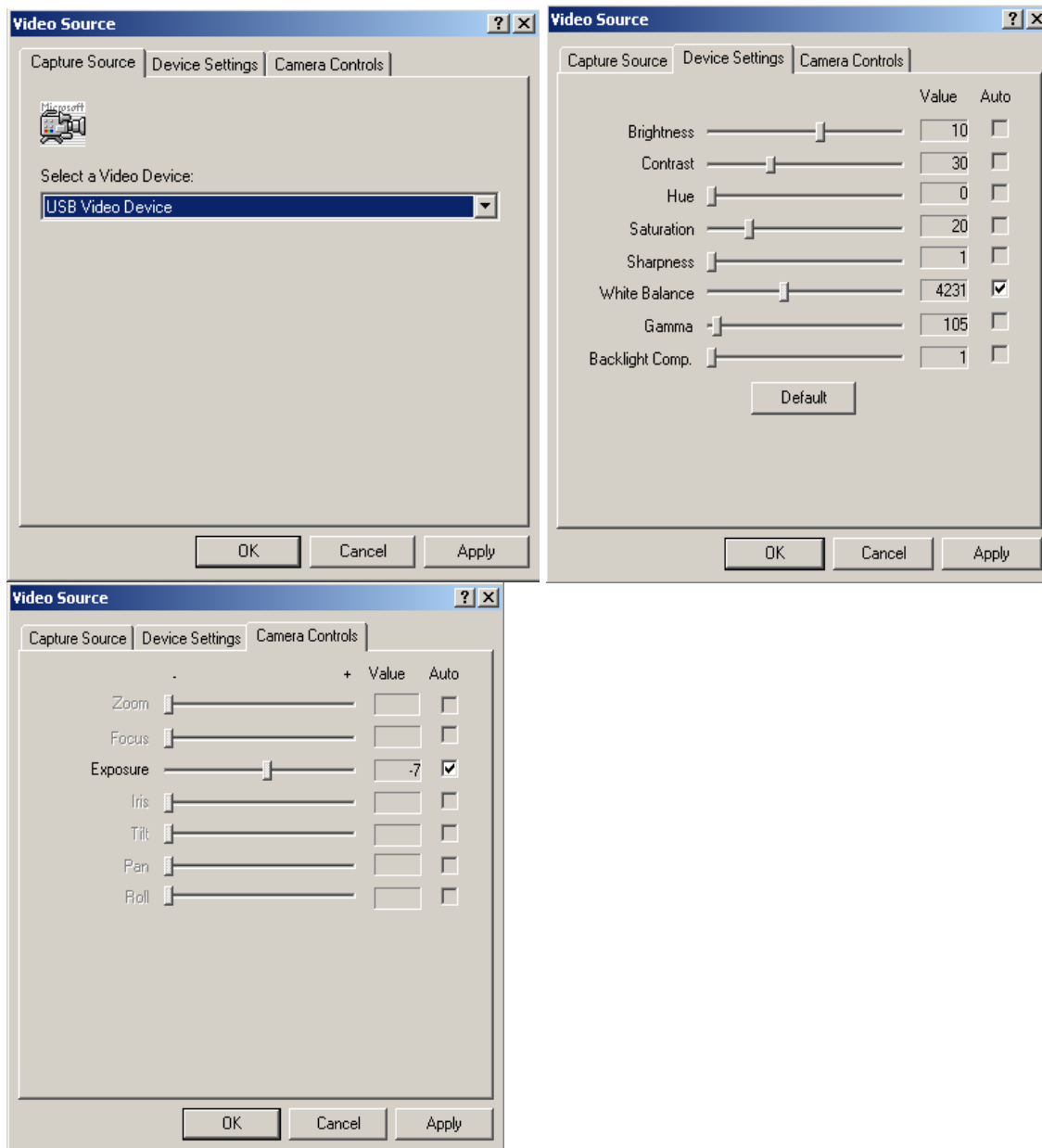
Category: Visual, Non-Visual.

Ref #: Enhancement

Problem: Missing video source controls.

Resolution: Added video source control dialog to the vxPP Options menu. Dialogs shown below:

vxPatientPicture OPEN SOURCE RELEASE NOTES



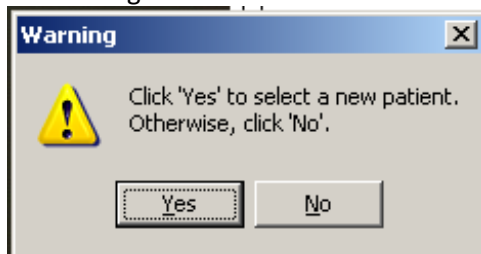
Category: Visual, Non-Visual.

Ref #: Defect 69

Problem: Receiving errors: 'Division by Zero' and 'Picture storage failed'.

Resolution: Fixed. Added new dialog after Capture, confirm = 'No'.

New dialog:



Category: Visual, Non-Visual.

vxPatientPicture OPEN SOURCE RELEASE NOTES

Ref #: Enhancement

Problem: .

Resolution: New manual crop rectangle can be drawn, then subsequently moved around the crop screen image without having to draw another crop rectangle. User can move the rectangle around the image as desired, until in the desired position. User can change the crop rectangle by performing a manual crop.

Category: Visual, Non-Visual.

Ref #: Enhancement

Problem: .

Resolution: Added a default 4:3 aspect ratio, crop rectangle to the crop screen. This default rectangle is not visible to the user.

If user opens the crop screen, then clicks the 'crop' button without actually performing a manual crop, the default crop rectangle is used.

Category: Visual, Non-Visual.

Ref #: Defect 78

Problem: The presence of 'Admin' on the vxPP menu is not being updated when logging in as user with different rights than that of the prior user.

Resolution: Fixed.

Category: Visual, Non-Visual.

Ref #: Enhancement

Problem:

Resolution: Now forcing user to perform image crop. This is made as convenient for user as possible (see Enhancement above, re: default crop rectangle)..

Category: Visual, Non-Visual.

Ref #: Enhancement

Problem: .

Resolution: Image Preview pane now displaying at 3:4 aspect ratio after Capture, and 4:3 aspect ratio after crop.

Preview pane size now changing as needed, depending on user path thru the application.

Category: Visual, Non-Visual.

Ref #: Enhancement

Problem: .

Resolution: Reinstated 400x300 capture/save image resolution on vxPP Option menu.

Category: Visual, Non-Visual.

Ref #: Defect 58

Problem: Images are stored in their full original size and resolution.

Resolution: Image size/resolution now controlled by 400x300 capture/save image resolution on vxPP Option menu.

Category: Visual, Non-Visual.

vxPatientPicture OPEN SOURCE RELEASE NOTES

Ref #: Enhancement

Problem: .

Resolution: Added vxPatientPicture.INI file to persist thumbnail resolution settings on the vxPP Options menu.

Category: Visual, Non-Visual.

Ref #: Defect 77

Problem: Crop window is correctly showing an image - Preview is blank.

Resolution: Fixed, with a work-around. Now disabling 'Crop' and 'Accept' buttons on patient select/cancel.

Category: Visual, Non-Visual.

Ref #: Defect 71

Problem: Aspect ratio of cropped image and uncropped image should be the same.

Resolution: Fixed by enforcing 4:3 aspect ratio at all stages except for Capture.

Category: Visual, Non-Visual.

Ref #: Defect 74

Problem: 'Application context has not been created', message should be more user friendly.

Resolution: No change to be made, per Lee Miller.

vxPatientPicture v0.1.3.10

Category: Visual, Non-Visual.

Ref #: Defect 63

Problem: Selection of crop area can be extended outside image border, resulting in the inclusion of white space within the final image. (This is not the same issue as #59 where white space WITHIN the preview area was being displayed.)

Resolution: Fixed. Crop area now restricted to top, right, bottom and left edges

Category: Visual, Non-Visual.

Ref #: Defect 85

Problem: 'Warning' dialog is being displayed upon login. The message displayed is : "Click Yes to select a new patient. Otherwise, click No" . The message was not present upon login in prior versions A 'warning' should be reserved for functions such as confirmation of image Deletion request. The dialog itself does not appear to serve a purpose, as the user will have to click something, either: 'Yes' to answer the dialog that user wants to select a patient, or if the dialog were not present then user would have to click 'Select Patient'. Both paths produce the same result.

Resolution: Fixed

Category: Visual, Non-Visual.

Ref #: Defect 88

Problem: Existing image is temporarily skewed when a new image is captured.

Resolution: Fixed

Category: Visual, Non-Visual.

Ref #: Defect 89

Problem: User is unable to determine what area of the picture will be captured when accepting the default crop area.

vxPatientPicture OPEN SOURCE RELEASE NOTES

Resolution: Fixed. Default crop rectangle visible on form show. Default crop rectangle disappears on first mouse click.

Category: Visual, Non-Visual.

Ref #: Defect 92

Problem: Mouse click (without drawing crop rectangle) followed by clicking 'Crop button results in the capture of a completely black image.

Resolution: Fixed. Problem was caused by app trying to crop an image to a single point.

Category: Visual, Non-Visual.

Ref #: Enhancement

Problem: Difficult to tell if a cropped image has white space on edges resulting from faulty crop.

Resolution: Background color of Preview Pane now very light silver to differentiate the image area from the pane itself.

This makes any white space on a cropped image readily apparent.

Category: Visual, Non-Visual.

Ref #: De-hancement

Problem: .

Resolution: Removed Driver information dialog from 'About' menu.

Category: Visual, Non-Visual.

Ref #: De-hancement

Problem: .

Resolution: Removed tsCap32 right-click popup menu.

vxPatientPicture v0.1.3.11

Category: Visual, Non-Visual.

Ref #: Defect 66

Problem: vxPP allowing application to be opened by users that do not have vxPP menu option.

Resolution: Fixed. (Unit tested on vxCPT)

Category: Visual, Non-Visual.

Ref #: Defect 63

Problem: Crop are can be extended outside image border.

Resolution: Fixed (with caveat. See 'Known Issues' in 'Notes to QA')

Category: Visual, Non-Visual.

Ref #: Defect 97

Problem: Upon login, the undo button is still enabled from a prior session.

Resolution: Fixed

Category: Visual, Non-Visual.

Ref #: Defect 94

Problem: Numerous debugging corrdinates are visible in the Crop window.

Resolution: Fixed

Category: Visual, Non-Visual.

Ref #: Defect 95

vxPatientPicture OPEN SOURCE RELEASE NOTES

Problem: Default picture Preview for patient with no associated image does not display correctly.

Resolution: Fixed

Category: Visual, Non-Visual.

Ref #: Defect 98

Problem: In crop window, clicking 'Undo' after clicking 'crop' results in the 'OK' button being incorrectly enabled.

Resolution: Fixed primary issue, and Addenda issues.

vxPatientPicture v0.1.3.12

Category: Visual, Non-Visual.

Ref #: Defect 104

Problem: Error 'The system cannot find the file specified' is recieved if new vxPP instance launch is attempted..

Resolution: Fixed. Problem was vxPP trying to delete a temp image file that had already been deleted.

Category: Visual, Non-Visual.

Ref #: Defect 95

Problem: Default Picture Preview for patient with no associated image does not display correctly.

Resolution: Fixed.

Category: Visual, Non-Visual.

Ref #: Defect 102

Problem: Undo button in Crop window should be disabled until there is an action to undo.

Resolution: Fixed.

Category: Visual, Non-Visual.

Ref #: Defect 66

Problem: vxPP allowing applicationa to be opened by users that do not have VFDVXP PATIENT PIC CONTEXT menu option.

Resolution: Fixed. NOTE: Many user-logins on vxCPT have XUPROG and/or XUPROGMODE (see 'Notes to QA', below).

Category: Visual, Non-Visual.

Ref #: Defect 75

Problem: 'Maximize' button should be disabled.

Resolution: Fixed.

Category: Visual, Non-Visual.

Ref #: Defect 97

Problem: Upon login, the undo button is still enabled from a prior session.

Resolution: Fixed.

Category: Visual, Non-Visual.

Ref #: Enhancement

Problem: Moveable crop rectangle can be moved outside image borders.

Resolution: Crop rectangle now restricted to image borders.

vxPatientPicture v0.1.3.13

Category: Visual, Non-Visual.

Ref #: Defect 66 (part II)

Problem: vxPP allowing application to be opened by users that do not have VFDVXP PATIENT PIC CONTEXT menu option.

Resolution: Now disallowing login w/o VFDVXP PATIENT PIC CONTEXT. vxPP will continue to run for users that do not have VFDVXP PATIENT PIC CONTEXT menu option, but only Login and Close buttons are enabled.

Category: Visual, Non-Visual.

Ref #: Defect 93

Problem: Drawing crop area causes severe flicker of the image in the crop window.

Resolution: Fixed.

vxPatientPicture v0.1.4.0

Category: Visual, Non-Visual.

Ref #: Defect 79

Problem: Admin > Division setting appears to incorrectly reflect the number of files that can be saved per subdirectory.

Resolution: vxPP now counts only .jpg files in image subdirectories, and ignores hidden files or any files with file extensions other than 'jpg'.

Category: Visual, Non-Visual.

Ref #: Defect 101

Problem: Receiving error: 'Remove Procedure DGSENSITIVE RECORD BULLETIN not registered to option VFDVXPPATIENT PIC CONTEXT'.

Resolution: Fixed by KIDS build VFDVXP_PATIENT_PIC_GUI_1_0_T7.KID.

Category: Visual, Non-Visual.

Ref #: Defect 87

Problem: Video capture driver information includes foreign language button label 'Abbrechen'.

Resolution: Fixed. Changed button label 'Abbrechen' to 'Cancel', then modified, rebuilt, reinstalled package tscap32_delphi7_release.

vxPatientPicture v0.1.4.1

Category: Visual, Non-Visual.

Ref #: Defect 66, Part II

Problem: A failed logon attempt due to missing menu context should not still open Patient Picture anyway. This is a security issue. Although developer indicated only Logon and Close are enabled, all settings under Option menu can still be changed by someone that shouldn't have access to the system. Yes, 'Options' can be disabled as well, however future changes could easily leave something inadvertently enabled that shouldn't be, just like 'Options' was this time. If the window is simply not displayed on failed logon in new window, then this will never have to be a concern. (Note that this is different than logging on from an EXISTING window after a logoff. In that case, the window should continue to be displayed after failed logon, which is functioning correctly.).

Resolution: Fixed.

vxPatientPicture v0.1.4.2

Category: Visual, Non-Visual.

Ref #: Defect 107

Problem: Cropped image in vxPP preview is "distorted" to full imPreview size when click 'No' on Select New Patient.

Resolution: Fixed.

vxPatientPicture v0.1.4.3

Category: Visual, Non-Visual.

Ref #: Defect 66, III

Problem: Buttons 'Capture Image' and 'Connect/Disconnect Camera' remain enabled on Logoff.

Resolution: Fixed. 'Capture Image' and 'Connect/Disconnect Camera' now disabled on Logoff.

vxPatientPicture v0.1.4.4

Category: Visual, Non-Visual.

Ref #: Defect 66, Part the Fourth

Problem: 'Admin' main menu item should be disabled on logoff of an Administrator.

Resolution: Fixed. Main menu items 'Admin' and 'Help > Broker History' now visible only for users that have

key VFDVXP PATIENT PIC ADMIN. If user has key VFDVXP PATIENT PIC ADMIN, then these two menu items will become

visible upon login. These two menu items become invisible on Logoff, regardless of user keys. Broker History

is included in this fix, since a non-Admin user should not have access to broker history, which potentially may contain patient medical information (PII), including patient location, IEN/DFN, MRN, Sensitive record status, etc.

vxPatientPicture v1.0.0.0

Category:

Ref #:

Problem:

Resolution: This build of vxPatientPicture.exe is the "roll-up" build of development version 0.1.4.4. The only thing different in 1.0.0.0 from 0.1.4.4 is the build number. No other changes.

vxPatientImages DLL

vxPatientImages v0.8.0.3

Reference #: None

Requester: vxPatient Picture **Category:** Enhancement

Problem Description: Previous versions of vxPatientImages.dll used an ini file to store the location of patient pictures.

Resolution: This version of vxPatient Picture uses two remote procedure calls currently part of the vxCPRS menu context to construct the location of the stored patient's picture. It then uses this link to

vxPatientPicture OPEN SOURCE RELEASE NOTES

load the file if it exists replacing the need of an ini file. The two remote procedure calls are VFDC XPAR GET VALUE to get the root of the HFS picture link location from the parameter VFDCVXP PATIENT PIC ROOT. The second RPC is VFDC DDR GETS ENTRY DATA to get the rest of the picture link including the picture name.

vxPatientImages v0.8.0.4

Reference #: None

Requester: vxPatient Picture **Category:** Enhancement

Problem Description: Not pictures (possible corrupt but still viewable) could not be loaded.

Resolution: Loadfromstream is used instead of loadfromfile.

vxPatientImages v0.8.0.5

Reference #: None

Requester: vxPatient Picture **Category:** Enhancement

Problem Description: No icon for popup.

Resolution: vxVistA icon added to the popup.

vxPatientImages v0.8.0.6

Reference #: None

Requester: vxPatient Picture **Category:** Enhancement

Problem Description:

Resolution: Better handling of the remote procedure calls.

vxPatientImages v0.8.0.7

Reference #: None

Requester: vxPatient Picture **Category:**

Problem Description: No license information within the source code.

Resolution: Added Apache license information to the source code (same as vxPP application).

QA Notes:

{

Copyright 2013 Document Storage Systems, Inc.

Licensed under the Apache License, Version 2.0 (the "License");

you may not use this file except in compliance with the License.

You may obtain a copy of the License at

<http://www.apache.org/licenses/LICENSE-2.0>

Unless required by applicable law or agreed to in writing, software

distributed under the License is distributed on an "AS IS" BASIS,

WITHOUT WARRANTIES OR CONDITIONS OF ANY KIND, either express or implied.

See the License for the specific language governing permissions and

limitations under the License.

}

vxPatientPicture OPEN SOURCE RELEASE NOTES

vxPatientImages v0.8.0.8

Reference #: None

Requester: vxPatient Picture **Category:**

Problem Description: Image aspect ratio when picture is enlarged does not match the aspect ratio of the captured imaged.

Resolution: Enlarged image now has an aspect ratio of 4:3 (H:300 x W:225).

vxPatient Picture KIDS

VFDVXP PATIENT PIC GUI 1.0 T1

Request: Internal

Category: Initial

vxVista Version: 2010.1 - 2011.1.2

vxCPRS GUI: 1.27.83.27

Level of Complexity: 5

Location of Files:

see Introduction (above)

Installation Instructions:

See Introduction Section (below)

Description of Changes and Enhancements

1. Functionality **vxCPRS Enhancements to Patient Information**
 - a. Customer None
 - b. Category Innovation

Functionality: vxCPRS

Customer: None

T#	Date	NOTES
VFDVXP PATIENT PIC GUI 1.0		
1	6/11/2013	a. Initial Release

Components:

Type: SINGLE PACKAGE	National Package: NO
Track Nationally: NO	Alpha/Beta Testing: ALPHA

New Security Key:

VFDVXP PATIENT PIC ADMIN

New Option:

VFDVXP PATIENT PIC CONTEXT MENU TEXT: VFDVXP PATIENT PIC CONTEXT

TYPE: Broker (Client/Server)

RPC: VFDC XPAR GET VALUE

RPC: VFDC DDR GETS ENTRY DATA

RPC: VFDC FM FILER

RPC: ORQPT DEFAULT LIST SORT

RPC: DSIW PATIENT LOOKUP

vxPatientPicture OPEN SOURCE RELEASE NOTES

RPC: ORWPT FULLSSN
RPC: ORWPT FULLSSN RPL
RPC: ORQPT DEFAULT LIST SOURCE
RPC: ORQPT DEFAULT PATIENT LIST
RPC: ORWPT DFLTSRC
RPC: ORQPT PROVIDER PATIENTS
RPC: ORQPT TEAM PATIENTS
RPC: ORQPT SPECIALTY PATIENTS
RPC: ORQPT CLINIC PATIENTS
RPC: ORWPT BYWARD
RPC: ORWPT TOP
RPC: ORQPT MAKE RPL
RPC: ORWPT LAST5
RPC: ORWPT LAST5 RPL
RPC: ORQPT READ RPL
RPC: DG SENSITIVE RECORD ACCESS
RPC: DG SENSITIVE RECORD BULLETIN
RPC: ORWPT DIEDON
RPC: ORQPT KILL RPL
RPC: ORQPT SPECIALTIES
RPC: ORQPT TEAMS
RPC: ORQPT WARDS
RPC: ORWU NEWPERS
RPC: ORWU CLINLOC
RPC: ORWPT CLINRNG
RPC: ORQPT DEFAULT CLINIC DATE RANG
RPC: ORWU USERINFO
RPC: ORWU HASKEY
RPC: ORWPT SELECT
RPC: ORWPT1 PRCARE
RPC: ORWPT INPLOC
RPC: ORWPT ENCTITL
RPC: ORWU DT
RPC: ORWCIRN FACLIST
RPC: ORWCH LOADSIZ
RPC: ORWPT ID INFO
RPC: ORPRF HASFLG
RPC: DG CHK BS5 XREF ARRAY
RPC: ORWPT SAVDFLT
RPC: ORWPT1 PCDETAIL
RPC: ORWU TOOLMENU
RPC: ORWUX SYMTAB
RPC: ORWU PATCH

vxPatientPicture OPEN SOURCE RELEASE NOTES

RPC: ORWU VERSRV
RPC: ORWCH LDFONT
RPC: ORWCH LOADALL
RPC: ORWPT SHARE
RPC: ORWCH SAVEALL
RPC: ORWCH SAVFONT
RPC: VFDC DATE CONVERT
RPC: ORWU EXTNAME
RPC: ORWU NPHASKEY
RPC: ORWU GBLREF
RPC: ORWU GENERIC
RPC: ORWU DEVICE
RPC: ORWU PARAM
RPC: ORWU HAS OPTION ACCESS
RPC: ORWU VALIDSIG
RPC: ORWORB FASTUSER
RPC: ORWPT LIST ALL
RPC: XWB DIRECT RPC
RPC: ORWPT LEGACY
RPC: DG CHK PAT/DIV MEANS TEST
RPC: ORWPT SELCHK
RPC: VAFCTFU CONVERT ICN TO DFN
RPC: ORWCV VST
RPC: ORWPT ADMITLST
RPC: ORWU HOSPLOC
RPC: ORWU1 NEWLOC
RPC: ORWU INPLOC
RPC: ORWCIRN CHECKLINK
RPC: ORWRP GET DEFAULT PRINTER
RPC: XWB GET VARIABLE VALUE
RPC: ORPRF HASCAT1
RPC: ORPRF GETFLG
RPC: ORPRF CLEAR

New Remote Parameter Definition:

VFDVXP PATIENT PIC ROOT

DESCRIPTION:

This parameter maintains the configuration data for the root path of patient pictures. This root along with the field(21603) value of the patient file(2) completes the location of the patient's picture. This link is used by the vxPatient Picture app and vxCPRS extension dll (vxPatientImages.dll) to load and display the image. You must ensure that the root plus the 21603 entry equal a valid path including the picture

vxPatientPicture OPEN SOURCE RELEASE NOTES

name. The vxPatient Picture application will handle storing the the second half of the address beyond the root defined by this parameter.

DD changes:

File 2 (Patient) Partial DD: subDD: 2 fld: 21603

VFDVXP PATIENT PIC GUI 1.0 T2

Request: Internal

Category: Initial

vxVistA Version: 2010.1 - 2011.1.2

vxCPRS GUI: 1.27.83.27+

Level of Complexity: 5

Location of Files: see Introduction (above)

Installation Instructions: See Introduction Section (below)

Description of Changes and Enhancements

2. Functionality **vxCPRS Enhancements to Patient Information**

a. Customer None

b. Category Innovation

Functionality: **vxCPRS**

Customer: None

T#	Date	NOTES
VFDVXP PATIENT PIC GUI 1.0		
1	6/11/2013	b. Initial Release
2	6/26/2013	c. T2 Release

Components:

Type: SINGLE PACKAGE	National Package: NO
Track Nationally: NO	Alpha/Beta Testing: ALPHA

New Security Key:

VFDVXP PATIENT PIC ADMIN

New Option:

VFDVXP PATIENT PIC CONTEXT MENU TEXT: VFDVXP PATIENT PIC CONTEXT

TYPE: Broker (Client/Server)

RPC: VFDC XPAR GET VALUE

RPC: VFDC DDR GETS ENTRY DATA

RPC: VFDC FM FILER

RPC: ORQPT DEFAULT LIST SORT

RPC: DSIW PATIENT LOOKUP

RPC: ORWPT FULLSSN

vxPatientPicture OPEN SOURCE RELEASE NOTES

RPC: ORWPT FULLSSN RPL
RPC: ORQPT DEFAULT LIST SOURCE
RPC: ORQPT DEFAULT PATIENT LIST
RPC: ORWPT DFLTSRC
RPC: ORQPT PROVIDER PATIENTS
RPC: ORQPT TEAM PATIENTS
RPC: ORQPT SPECIALTY PATIENTS
RPC: ORQPT CLINIC PATIENTS
RPC: ORWPT BYWARD
RPC: ORWPT TOP
RPC: ORQPT MAKE RPL
RPC: ORWPT LAST5
RPC: ORWPT LAST5 RPL
RPC: ORQPT READ RPL
RPC: DG SENSITIVE RECORD ACCESS
RPC: DG SENSITIVE RECORD BULLETIN
RPC: ORWPT DIEDON
RPC: ORQPT KILL RPL
RPC: ORQPT SPECIALTIES
RPC: ORQPT TEAMS
RPC: ORQPT WARDS
RPC: ORWU NEWPERS
RPC: ORWU CLINLOC
RPC: ORWPT CLINRNG
RPC: ORQPT DEFAULT CLINIC DATE RANG
RPC: ORWU USERINFO
RPC: ORWU HASKEY
RPC: ORWPT SELECT
RPC: ORWPT1 PRCARE
RPC: ORWPT INPLOC
RPC: ORWPT ENCTITL
RPC: ORWU DT
RPC: ORWCIRN FACLIST
RPC: ORWCH LOADSIZ
RPC: ORWPT ID INFO
RPC: ORPRF HASFLG
RPC: DG CHK BS5 XREF ARRAY
RPC: ORWPT SAVDFLT
RPC: ORWPT1 PCDETAIL
RPC: ORWU TOOLMENU
RPC: ORWUX SYMTAB
RPC: ORWU PATCH
RPC: ORWU VERSRV

vxPatientPicture OPEN SOURCE RELEASE NOTES

RPC: ORWCH LDFONT
RPC: ORWCH LOADALL
RPC: ORWPT SHARE
RPC: ORWCH SAVEALL
RPC: ORWCH SAVFONT
RPC: VFDC DATE CONVERT
RPC: ORWU EXTNAME
RPC: ORWU NPHASKEY
RPC: ORWU GBLREF
RPC: ORWU GENERIC
RPC: ORWU DEVICE
RPC: ORWU PARAM
RPC: ORWU HAS OPTION ACCESS
RPC: ORWU VALDSIG
RPC: ORWORB FASTUSER
RPC: ORWPT LIST ALL
RPC: XWB DIRECT RPC
RPC: ORWPT LEGACY
RPC: DG CHK PAT/DIV MEANS TEST
RPC: ORWPT SELCHK
RPC: VAFCTFU CONVERT ICN TO DFN
RPC: ORWCV VST
RPC: ORWPT ADMITLST
RPC: ORWU HOSPLOC
RPC: ORWU1 NEWLOC
RPC: ORWU INPLOC
RPC: ORWCIRN CHECKLINK
RPC: ORWRP GET DEFAULT PRINTER
RPC: XWB GET VARIABLE VALUE
RPC: ORPRF HASCAT1
RPC: ORPRF GETFLG
RPC: ORPRF CLEAR

New Remote Parameter Definition:

VFDVXP PATIENT PIC ROOT
VFDVXP PATIENT PIC MAX IMAGES

DESCRIPTION: (VFDVXP PATIENT PIC ROOT)

This parameter maintains the configuration data for the root path of patient pictures. This root along with the field(21603) value of the patient file(2) completes the location of the patient's picture. This link is used by the vxPatient Picture app and vxCPRS extension dll (vxPatientImages.dll) to load and display the image. You must ensure that the root plus the 21603 entry equal a valid path including the picture

vxPatientPicture OPEN SOURCE RELEASE NOTES

name. The vxPatient Picture application will handle storing the second half of the address beyond the root defined by this parameter.

DESCRIPTION: (VFDVXP PATIENT PIC MAX IMAGES)

The vxPatient Picture application will only allow the total maximum number of files indicated by this parameter to exist in a folder before creating a subfolder. Therefore, if the VFDVXP PATIENT PIC ROOT is defined as "C:\HFS\" and this parameter is set to 5 then the vxPatient Picture application will create a subfolder in that directory if the total number of files in that directory reaches 5 or more.

DD changes:

File 2 (Patient) Partial DD: subDD: 2 fld: 21603

VFDVXP PATIENT PIC GUI 1.0 T3

Request: Internal

Category: Initial

vxVistA Version: 2010.1 - 2011.1.2

vxCPRS GUI: 1.27.83.27+

Level of Complexity: 1

Location of Files: See Introduction (above)

Installation Instructions: See Introduction Section (below)

Description of Changes and Enhancements

3. Functionality **vxCPRS Enhancements to Patient Information**

a. Customer None

b. Category Innovation

Functionality: **vxCPRS**

Customer: None

T#	Date	Notes
History of Release		
1	6/11/2013	d. Initial Release
2	6/26/2013	e. T2 Release
3	7/10/2013	f. T3 Release
Change Log		
7/10/2013	Many RPCs registered to the VFDVXP PATIENT PIC CONTEXT have been removed. These RPCs are a part of the original uCore and rCore source files from CPRS; the source files are needed for the patient selection but all the RPCs included within them are not. Two additional RPCs have been added to the menu context VFDC XPAR GET ALL and VFDC XPAR EDIT. These RPCs are to be used for the admin processes of the GUI (to allow a user with the VFDVXP PATIENT PIC ADMIN security key to change the	

vxPatientPicture OPEN SOURCE RELEASE NOTES

	parameters via the GUI. However, these RPCs have not yet been included in the vxVistA open source stack, but future releases will include them. For now, the vxPatient Picture team has obtained approval to include them as part of this build but will later be removed.
--	--

Components:

Type: SINGLE PACKAGE	National Package: NO
Track Nationally: NO	Alpha/Beta Testing: ALPHA

New Security Key:

VFDVXP PATIENT PIC ADMIN

Remote Procedure:

VFDC XPAR EDIT

VFDC XPAR GET ALL

New Option:

VFDVXP PATIENT PIC CONTEXT MENU TEXT: VFDVXP PATIENT PIC CONTEXT

TYPE: Broker (Client/Server)

RPC: ORWU USERINFO

RPC: ORWU HASKEY

RPC: ORWPT DIEDON

RPC: ORWPT SELECT

RPC: ORWU HAS OPTION ACCESS

RPC: ORQPT DEFAULT LIST SOURCE

RPC: ORWPT TOP

RPC: DG SENSITIVE RECORD ACCESS

RPC: ORWPT ID INFO

RPC: ORWPT1 PRCARE

RPC: VFDC DDR GETS ENTRY DATA

RPC: VFDC XPAR GET VALUE

RPC: VFDC FM FILER

RPC: VFDC XPAR EDIT

RPC: VFDC XPAR GET ALL

New Remote Parameter Definition:

VFDVXP PATIENT PIC ROOT

VFDVXP PATIENT PIC MAX IMAGES

DESCRIPTION: (VFDVXP PATIENT PIC ROOT)

vxPatientPicture OPEN SOURCE RELEASE NOTES

This parameter maintains the configuration data for the root path of patient pictures. This root along with the field(21603) value of the patient file(2) completes the location of the patient's picture. This link is used by the vxPatient Picture app and vxCPRS extension dll (vxPatientImages.dll) to load and display the image. You must ensure that the root plus the 21603 entry equal a valid path including the picture name. The vxPatient Picture application will handle storing the second half of the address beyond the root defined by this parameter.

DESCRIPTION: (VFDVXP PATIENT PIC MAX IMAGES)

The vxPatient Picture application will only allow the total maximum number of files indicated by this parameter to exist in a folder before creating a subfolder. Therefore, if the VFDVXP PATIENT PIC ROOT is defined as "C:\HFS\" and this parameter is set to 5 then the vxPatient Picture application will create a subfolder in that directory if the total number of files in that directory reaches 5 or more.

DD changes:

File 2 (Patient) Partial DD: subDD: 2 fld: 21603

VFDVXP PATIENT PIC GUI 1.0 T4

Request: Internal

Category: Initial

vxVistA Version: 2010.1 - 2011.1.2

vxCPRS GUI: 1.27.83.27+

Level of Complexity: 1

Location of Files: See Introduction (above)

Installation Instructions: See Introduction Section (below)

Description of Changes and Enhancements

4. Functionality **vxCPRS Enhancements to Patient Information**

a. Customer None

b. Category Innovation

Functionality: **vxCPRS**

Customer: None

T#	Date	Notes
History of Release		
1	6/11/2013	g. Initial Release
2	6/26/2013	h. T2 Release
3	7/10/2013	i. T3 Release
4	7/10/2013	j. T4 Release
Change Log		
	7/10/2013	Many RPCs registered to the VFDVXP PATIENT PIC CONTEXT have been removed. These RPCs are a part of the original uCore and rCore source files from CPRS; the source files are needed for the patient selection but all the RPCs included within

vxPatientPicture OPEN SOURCE RELEASE NOTES

	<p>them are not.</p> <p>Two additional RPCs have been added to the menu context VFDC XPAR GET ALL and VFDC XPAR EDIT. These RPCs are to be used for the admin processes of the GUI (to allow a user with the VF DVXP PATIENT PIC ADMIN security key to change the parameters via the GUI. However, these RPCs have not yet been included in the vxVistA open source stack, but future releases will include them. For now, the vxPatient Picture team has obtained approval to include them as part of this build but will later be removed.</p>
7/10/2013	<p>The undefined RET variable in the routine VFDCXPR1 caused the RPC, VFDC XPAR GET ALL to throw an error. RET was intended to be renamed VFDRET; this intention has been fulfilled. To correct this issue elsewhere it was necessary to temporally include the routine as part of this build. Furthermore, the validation (VALUE DOMAIN) for the VF DVXP PATIENT PIC MAX IMAGES was incorrect; it was written as 1:100,000 instead of 1:1000000. This too has been corrected.</p>

Components:

Type: SINGLE PACKAGE	National Package: NO
Track Nationally: NO	Alpha/Beta Testing: ALPHA

New Security Key:

VF DVXP PATIENT PIC ADMIN

Remote Procedure:

VFDC XPAR EDIT
VFDC XPAR GET ALL

Routine:

VFDCXPR1

New Option:

VF DVXP PATIENT PIC CONTEXT MENU TEXT: VF DVXP PATIENT PIC CONTEXT
TYPE: Broker (Client/Server)
RPC: ORWU USERINFO
RPC: ORWU HASKEY
RPC: ORWPT DIEDON
RPC: ORWPT SELECT
RPC: ORWU HAS OPTION ACCESS
RPC: ORQPT DEFAULT LIST SOURCE

vxPatientPicture OPEN SOURCE RELEASE NOTES

RPC: ORWPT TOP
RPC: DG SENSITIVE RECORD ACCESS
RPC: ORWPT ID INFO
RPC: ORWPT1 PRCARE
RPC: VFDC DDR GETS ENTRY DATA
RPC: VFDC XPAR GET VALUE
RPC: VFDC FM FILER
RPC: VFDC XPAR EDIT
RPC: VFDC XPAR GET ALL

New Remote Parameter Definition:

VFDVXP PATIENT PIC ROOT
VFDVXP PATIENT PIC MAX IMAGES

DESCRIPTION: (VFDVXP PATIENT PIC ROOT)

This parameter maintains the configuration data for the root path of patient pictures. This root along with the field(21603) value of the patient file(2) completes the location of the patient's picture. This link is used by the vxPatient Picture app and vxCPRS extension dll (vxPatientImages.dll) to load and display the image. You must ensure that the root plus the 21603 entry equal a valid path including the picture name. The vxPatient Picture application will handle storing the second half of the address beyond the root defined by this parameter.

DESCRIPTION: (VFDVXP PATIENT PIC MAX IMAGES)

The vxPatient Picture application will only allow the total maximum number of files indicated by this parameter to exist in a folder before creating a subfolder. Therefore, if the VFDVXP PATIENT PIC ROOT is defined as "C:\HFS\" and this parameter is set to 5 then the vxPatient Picture application will create a subfolder in that directory if the total number of files in that directory reaches 5 or more.

DD changes: File 2 (Patient) Partial DD: subDD: 2 fld: 21603

VFDVXP PATIENT PIC GUI 1.0 T5

Request: Internal **Category:** Initial **vxVistA Version:** 2010.1 - 2011.1.2
vxCPRS GUI: 1.27.83.27+ **Level of Complexity:** 1
Location of Files: See Introduction (above)
Installation Instructions: See Introduction Section (below)

Description of Changes and Enhancements

5. Functionality **vxCPRS Enhancements to Patient Information**
 a. Customer None
 b. Category Innovation

Functionality: vxCPRS

Customer: None

T#	Date	Notes
History of Release		
1	6/11/2013	k. Initial Release
2	6/26/2013	l. T2 Release
3	7/10/2013	m. T3 Release
4	7/10/2013	n. T4 Release
5	7/16/2013	o. T5 Release
Change Log		
7/10/2013	<p>Many RPCs registered to the VF DVXP PATIENT PIC CONTEXT have been removed. These RPCs are a part of the original uCore and rCore source files from CPRS; the source files are needed for the patient selection but all the RPCs included within them are not.</p> <p>Two additional RPCs have been added to the menu context VFDC XPAR GET ALL and VFDC XPAR EDIT. These RPCs are to be used for the admin processes of the GUI (to allow a user with the VF DVXP PATIENT PIC ADMIN security key to change the parameters via the GUI. However, these RPCs have not yet been included in the vxVistA open source stack, but future releases will include them. For now, the vxPatient Picture team has obtained approval to include them as part of this build but will later be removed.</p>	
7/10/2013	<p>The undefined RET variable in the routine VFDCXPR1 caused the RPC, VFDC XPAR GET ALL to throw an error. RET was intended to be renamed VFDRET; this intention has been fulfilled. To correct this issue elsewhere it was necessary to temporarily include the routine as part of this build. Furthermore, the validation (VALUE DOMAIN) for the VF DVXP PATIENT PIC MAX IMAGES was incorrect; it was written as 1:100,000 instead of 1:1000000. This too has been corrected.</p>	
7/16/2013	<p>The following RPCs were added to the menu context (VF DVXP PATIENT PIC CONTEXT) as they are, in fact, called by the application, specifically the patient selection. However, the goal is to only have referenced what is needed.</p> <p>ORWPT DFLTSRC DG CHK BS5 XREF ARRAY ORPRF HASFLG ORQPT DEFAULT PATIENT LIST ORQPT DEFAULT LIST SORT ORWCH LOADSIZ ORQPT WARDS ORWU CLINLOC ORQPT DEFAULT CLINIC DATE RANG</p>	

vxPatientPicture OPEN SOURCE RELEASE NOTES

	ORWPT CLINRNG ORQPT SPECIALTIES ORQPT TEAMS ORWU NEWPERS ORWPT SAVDFLT ORWPT BYWARD ORQPT SPECIALTY PATIENTS ORQPT PROVIDER PATIENTS ORQPT TEAM PATIENTS ORQPT CLINIC PATIENTS ORWPT INPLOC
--	---

Components:

Type: SINGLE PACKAGE	National Package: NO
Track Nationally: NO	Alpha/Beta Testing: ALPHA

New Security Key:

VFDVXP PATIENT PIC ADMIN

Remote Procedure:

VFDC XPAR EDIT
VFDC XPAR GET ALL

Routine:

VFDCXPR
VFDCXPR1
VFDCXPR3

New Option:

VFDVXP PATIENT PIC CONTEXT MENU TEXT: VFDVXP PATIENT PIC CONTEXT
TYPE: Broker (Client/Server)
RPC: ORWU USERINFO
RPC: ORWU HASKEY
RPC: ORWPT DIEDON
RPC: ORWPT SELECT
RPC: ORWU HAS OPTION ACCESS
RPC: ORQPT DEFAULT LIST SOURCE
RPC: ORWPT TOP
RPC: DG SENSITIVE RECORD ACCESS
RPC: ORWPT ID INFO
RPC: ORWPT1 PRCARE

vxPatientPicture OPEN SOURCE RELEASE NOTES

RPC: ORWPT DFLTSRC
RPC: DG CHK BS5 XREF ARRAY
RPC: ORPRF HASFLG
RPC: ORQPT DEFAULT PATIENT LIST
RPC: ORQPT DEFAULT LIST SORT
RPC: ORWCH LOADSIZ
RPC: ORQPT WARDS
RPC: ORWU CLINLOC
RPC: ORQPT DEFAULT CLINIC DATE RANG
RPC: ORWPT CLINRNG
RPC: ORQPT SPECIALTIES
RPC: ORQPT TEAMS
RPC: ORWU NEWPERS
RPC: ORWPT SAVDFLT
RPC: ORWPT BYWARD
RPC: ORQPT SPECIALTY PATIENTS
RPC: ORQPT PROVIDER PATIENTS
RPC: ORQPT TEAM PATIENTS
RPC: ORQPT CLINIC PATIENTS
RPC: ORWPT INPLOC
RPC: VFDC DDR GETS ENTRY DATA
RPC: VFDC XPAR GET VALUE
RPC: VFDC FM FILER
RPC: VFDC XPAR EDIT
RPC: VFDC XPAR GET ALL

New Remote Parameter Definition:

VFDVXP PATIENT PIC ROOT
VFDVXP PATIENT PIC MAX IMAGES

DESCRIPTION: (VFDVXP PATIENT PIC ROOT)

This parameter maintains the configuration data for the root path of patient pictures. This root along with the field(21603) value of the patient file(2) completes the location of the patient's picture. This link is used by the vxPatient Picture app and vxCPRS extension dll (vxPatientImages.dll) to load and display the image. You must ensure that the root plus the 21603 entry equal a valid path including the picture name. The vxPatient Picture application will handle storing the second half of the address beyond the root defined by this parameter.

DESCRIPTION: (VFDVXP PATIENT PIC MAX IMAGES)

The vxPatient Picture application will only allow the total maximum number of files indicated by this parameter to exist in a folder before creating a subfolder. Therefore, if the VFDVXP PATIENT PIC ROOT is defined as "C:\HFS\" and this parameter is set to 5 then the vxPatient Picture application will create a subfolder in that directory if the total number of files in that directory reaches 5 or more.

DD changes:

File 2 (Patient) Partial DD: subDD: 2 fld: 21603

VFDVXP PATIENT PIC GUI 1.0 T6

Request: Internal

Category: Initial

vxVistA Version: 2010.1 - 2011.1.2

vxCPRS GUI: 1.27.83.27+

Level of Complexity: 1

Location of Files: See Introduction (above)

Installation Instructions: See Introduction Section (below)

Description of Changes and Enhancements

6. Functionality vxCPRS Enhancements to Patient Information

a. Customer None

b. Category Innovation

Functionality: vxCPRS

Customer: None

T#	Date	Notes
History of Release		
1	6/11/2013	p. Initial Release
2	6/26/2013	q. T2 Release
3	7/10/2013	r. T3 Release
4	7/10/2013	s. T4 Release
5	7/16/2013	t. T5 Release
6	7/19/2013	u. T6 Release
Change Log		
7/10/2013	<p>Many RPCs registered to the VFDVXP PATIENT PIC CONTEXT have been removed. These RPCs are a part of the original uCore and rCore source files from CPRS; the source files are needed for the patient selection but all the RPCs included within them are not.</p> <p>Two additional RPCs have been added to the menu context VFDC XPAR GET ALL and VFDC XPAR EDIT. These RPCs are to be used for the admin processes of the GUI (to allow a user with the VFDVXP PATIENT PIC ADMIN security key to change the parameters via the GUI. However, these RPCs have not yet been included in the vxVistA open source stack, but future releases will include them. For now, the vxPatient Picture team has obtained approval to include them as part of this build but will later be removed.</p>	
7/10/2013	The undefined RET variable in the routine VFDCXPR1 caused the RPC, VFDC XPAR	

vxPatientPicture OPEN SOURCE RELEASE NOTES

	GET ALL to throw an error. RET was intended to be renamed VFDRET; this intention has been fulfilled. To correct this issue elsewhere it was necessary to temporarily include the routine as part of this build. Furthermore, the validation (VALUE DOMAIN) for the VFDVXP PATIENT PIC MAX IMAGES was incorrect; it was written as 1:100,000 instead of 1:1000000. This too has been corrected.
7/16/2013	<p>The following RPCs were added to the menu context (VFDVXP PATIENT PIC CONTEXT) as they are, in fact, called by the application, specifically the patient selection. However, the goal is to only have referenced what is needed.</p> <p> ORWPT DFLTSRC DG CHK BS5 XREF ARRAY ORPRF HASFLG ORQPT DEFAULT PATIENT LIST ORQPT DEFAULT LIST SORT ORWCH LOADSIZ ORQPT WARDS ORWU CLINLOC ORQPT DEFAULT CLINIC DATE RANG ORWPT CLINRNG ORQPT SPECIALTIES ORQPT TEAMS ORWU NEWPERS ORWPT SAVDFLT ORWPT BYWARD ORQPT SPECIALTY PATIENTS ORQPT PROVIDER PATIENTS ORQPT TEAM PATIENTS ORQPT CLINIC PATIENTS ORWPT INPLOC </p>
7/19/2013	Removed ORWCH LOADSIZ

Components:

Type: SINGLE PACKAGE	National Package: NO
Track Nationally: NO	Alpha/Beta Testing: ALPHA

New Security Key:

VFDVXP PATIENT PIC ADMIN

Remote Procedure:

VFDC XPAR EDIT

vxPatientPicture OPEN SOURCE RELEASE NOTES

VFDC XPAR GET ALL

Routine:

VFDCXPR
VFDCXPR1
VFDCXPR3

New Option:

VFDEVXP PATIENT PIC CONTEXT MENU TEXT: VFDEVXP PATIENT PIC CONTEXT

TYPE: Broker (Client/Server)

RPC: ORWU USERINFO
RPC: ORWU HASKEY
RPC: ORWPT DIEDON
RPC: ORWPT SELECT
RPC: ORWU HAS OPTION ACCESS
RPC: ORQPT DEFAULT LIST SOURCE
RPC: ORWPT TOP
RPC: DG SENSITIVE RECORD ACCESS
RPC: ORWPT ID INFO
RPC: ORWPT1 PRCARE
RPC: ORWPT DFLTSRC
RPC: DG CHK BS5 XREF ARRAY
RPC: ORPRF HASFLG
RPC: ORQPT DEFAULT PATIENT LIST
RPC: ORQPT DEFAULT LIST SORT
RPC: ORQPT WARDS
RPC: ORWU CLINLOC
RPC: ORQPT DEFAULT CLINIC DATE RANG
RPC: ORWPT CLINRNG
RPC: ORQPT SPECIALTIES
RPC: ORQPT TEAMS
RPC: ORWU NEWPERS
RPC: ORWPT SAVDFLT
RPC: ORWPT BYWARD
RPC: ORQPT SPECIALTY PATIENTS
RPC: ORQPT PROVIDER PATIENTS
RPC: ORQPT TEAM PATIENTS
RPC: ORQPT CLINIC PATIENTS
RPC: ORWPT INPLOC
RPC: VFDC DDR GETS ENTRY DATA
RPC: VFDC XPAR GET VALUE
RPC: VFDC FM FILER

vxPatientPicture OPEN SOURCE RELEASE NOTES

RPC: VFDC XPAR EDIT

RPC: VFDC XPAR GET ALL

New Remote Parameter Definition:

VFDVXP PATIENT PIC ROOT

VFDVXP PATIENT PIC MAX IMAGES

DESCRIPTION: (VFDVXP PATIENT PIC ROOT)

This parameter maintains the configuration data for the root path of patient pictures. This root along with the field(21603) value of the patient file(2) completes the location of the patient's picture. This link is used by the vxPatient Picture app and vxCPRS extension dll (vxPatientImages.dll) to load and display the image. You must ensure that the root plus the 21603 entry equal a valid path including the picture name. The vxPatient Picture application will handle storing the second half of the address beyond the root defined by this parameter.

DESCRIPTION: (VFDVXP PATIENT PIC MAX IMAGES)

The vxPatient Picture application will only allow the total maximum number of files indicated by this parameter to exist in a folder before creating a subfolder. Therefore, if the VFDVXP PATIENT PIC ROOT is defined as "C:\HFS\" and this parameter is set to 5 then the vxPatient Picture application will create a subfolder in that directory if the total number of files in that directory reaches 5 or more.

DD changes:

File 2 (Patient) Partial DD: subDD: 2 fld: 21603

VFDVXP PATIENT PIC GUI 1.0 T7

Request: Internal

Category: Initial

vxVistA Version: 2010.1 - 2013

Description of Changes and Enhancements

7. Functionality **Patient Picture Display**

- a. Customer None
- b. Category Innovation

T#	Date	Notes
History of Release		
1	6/11/2013	v. Initial Release
2	6/26/2013	w. T2 Release
3	7/10/2013	x. T3 Release
4	7/10/2013	y. T4 Release
5	7/16/2013	z. T5 Release
6	7/19/2013	aa. T6 Release
7	9/23/2013	bb. T7 Release

Change Log	
7/10/2013	<p>Many RPCs registered to the VFDVXP PATIENT PIC CONTEXT have been removed. These RPCs are a part of the original uCore and rCore source files from CPRS; the source files are needed for the patient selection but all the RPCs included within them are not.</p> <p>Two additional RPCs have been added to the menu context VFDC XPAR GET ALL and VFDC XPAR EDIT. These RPCs are to be used for the admin processes of the GUI (to allow a user with the VFDVXP PATIENT PIC ADMIN security key to change the parameters via the GUI. However, these RPCs have not yet been included in the vxVistA open source stack, but future releases will include them. For now, the vxPatient Picture team has obtained approval to include them as part of this build but will later be removed.</p>
7/10/2013	<p>The undefined RET variable in the routine VFDCXPR1 caused the RPC, VFDC XPAR GET ALL to throw an error. RET was intended to be renamed VFDRET; this intention has been fulfilled. To correct this issue elsewhere it was necessary to temporarily include the routine as part of this build. Furthermore, the validation (VALUE DOMAIN) for the VFDVXP PATIENT PIC MAX IMAGES was incorrect; it was written as 1:100,000 instead of 1:1000000. This too has been corrected.</p>
7/16/2013	<p>The following RPCs were added to the menu context (VFDVXP PATIENT PIC CONTEXT) as they are, in fact, called by the application, specifically the patient selection. However, the goal is to only have referenced what is needed.</p> <p> ORWPT DFLTSRC DG CHK BS5 XREF ARRAY ORPRF HASFLG ORQPT DEFAULT PATIENT LIST ORQPT DEFAULT LIST SORT ORWCH LOADSIZ ORQPT WARDS ORWU CLINLOC ORQPT DEFAULT CLINIC DATE RANG ORWPT CLINRNG ORQPT SPECIALTIES ORQPT TEAMS ORWU NEWPERS ORWPT SAVDFLT ORWPT BYWARD ORQPT SPECIALTY PATIENTS ORQPT PROVIDER PATIENTS ORQPT TEAM PATIENTS </p>

vxPatientPicture OPEN SOURCE RELEASE NOTES

	ORQPT CLINIC PATIENTS ORWPT INPLOC
7/19/2013	Removed ORWCH LOADSIZ
9/23/2013	Added the “DG SENSITIVE RECORD BULLETIN” RPC to the “VFDVXP PATIENT PIC CONTEXT” option (Menu Context). Removed Routines and RPCs.

Components:

Type: SINGLE PACKAGE	National Package: NO
Track Nationally: NO	Alpha/Beta Testing: ALPHA

New Security Key:

VFDVXP PATIENT PIC ADMIN

New Option:

VFDVXP PATIENT PIC CONTEXT MENU TEXT: VFDVXP PATIENT PIC CONTEXT

TYPE: Broker (Client/Server)

RPC: ORWU USERINFO

RPC: ORWU HASKEY

RPC: ORWPT DIEDON

RPC: ORWPT SELECT

RPC: ORWU HAS OPTION ACCESS

RPC: ORQPT DEFAULT LIST SOURCE

RPC: ORWPT TOP

RPC: DG SENSITIVE RECORD ACCESS

RPC: DG SENSITIVE RECORD BULLETIN

RPC: ORWPT ID INFO

RPC: ORWPT1 PRCARE

RPC: ORWPT DFLTSRC

RPC: DG CHK BS5 XREF ARRAY

RPC: ORPRF HASFLG

RPC: ORQPT DEFAULT PATIENT LIST

RPC: ORQPT DEFAULT LIST SORT

RPC: ORQPT WARDS

RPC: ORWU CLINLOC

RPC: ORQPT DEFAULT CLINIC DATE RANG

RPC: ORWPT CLINRNG

RPC: ORQPT SPECIALTIES

RPC: ORQPT TEAMS

RPC: ORWU NEWPERS

RPC: ORWPT SAVDFLT

vxPatientPicture OPEN SOURCE RELEASE NOTES

RPC: ORWPT BYWARD
RPC: ORQPT SPECIALTY PATIENTS
RPC: ORQPT PROVIDER PATIENTS
RPC: ORQPT TEAM PATIENTS
RPC: ORQPT CLINIC PATIENTS
RPC: ORWPT INPLOC
RPC: VFDC DDR GETS ENTRY DATA
RPC: VFDC XPAR GET VALUE
RPC: VFDC FM FILER
RPC: VFDC XPAR EDIT
RPC: VFDC XPAR GET ALL

New Remote Parameter Definition:

VFDVXP PATIENT PIC ROOT
VFDVXP PATIENT PIC MAX IMAGES

DESCRIPTION: (VFDVXP PATIENT PIC ROOT)

This parameter maintains the configuration data for the root path of patient pictures. This root along with the field(21603) value of the patient file(2) completes the location of the patient's picture. This link is used by the vxPatient Picture app and vxCPRS extension dll (vxPatientImages.dll) to load and display the image. You must ensure that the root plus the 21603 entry equal a valid path including the picture name. The vxPatient Picture application will handle storing the second half of the address beyond the root defined by this parameter.

DESCRIPTION: (VFDVXP PATIENT PIC MAX IMAGES)

The vxPatient Picture application will only allow the total maximum number of files indicated by this parameter to exist in a folder before creating a subfolder. Therefore, if the VFDVXP PATIENT PIC ROOT is defined as "C:\HFS\" and this parameter is set to 5 then the vxPatient Picture application will create a subfolder in that directory if the total number of files in that directory reaches 5 or more.

DD changes:

File 2 (Patient) Partial DD: subDD: 2 fld: 21603